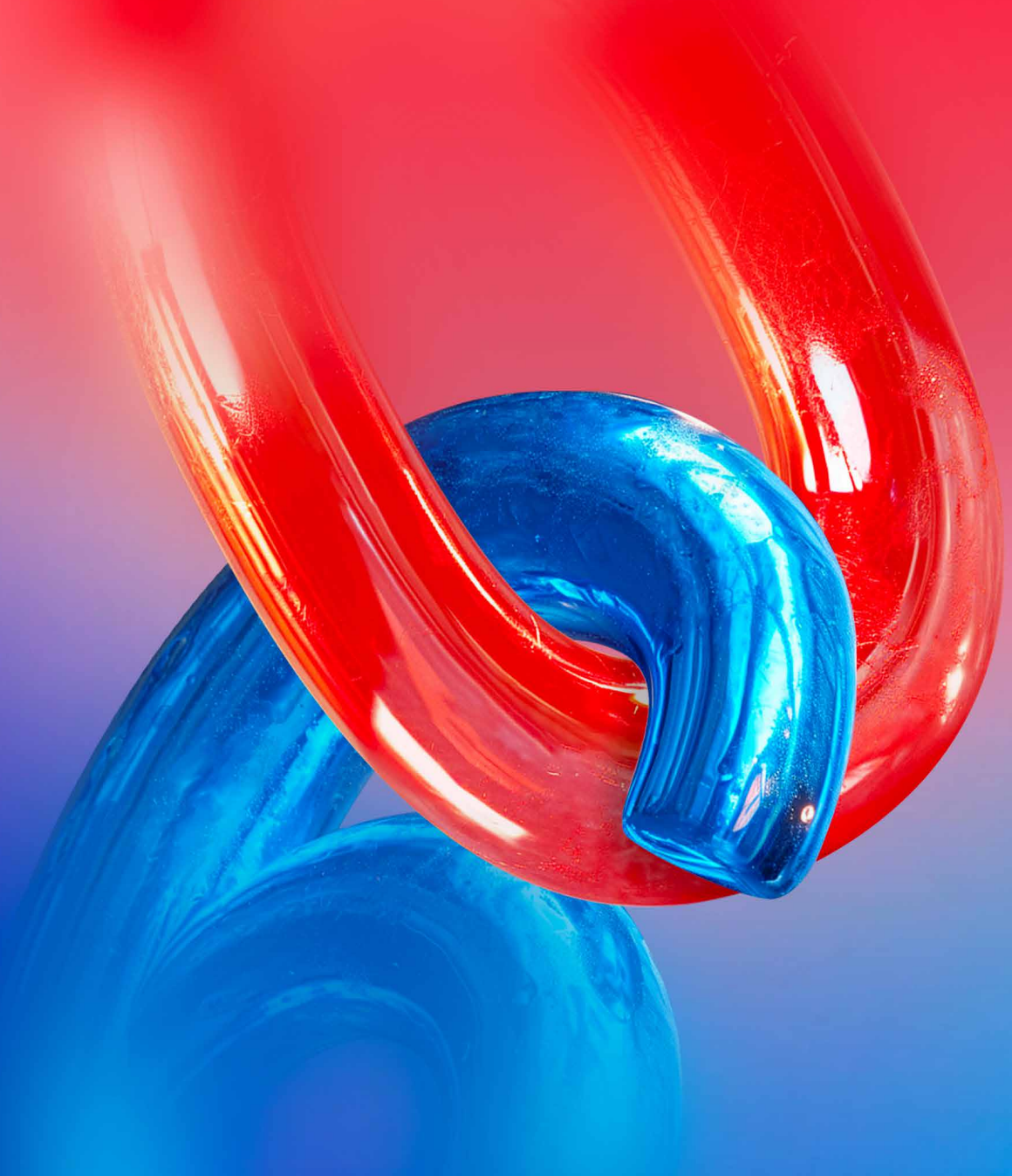


# PATRON MEMBERS MEMBERSHIP 2024



**Follow us**



WeChat



Linkedin

[www.ccifc.org](http://www.ccifc.org)

# OVERVIEW

CCI FRANCE CHINE created in 1992 is part of the worldwide network of CCI France International.

## 1<sup>st</sup>

French Network  
in China

## 2<sup>nd</sup>

French Chamber of  
Commerce in the world

## 119

Chambers of Commerce  
part of the CCI network

## 94

Countries part of the  
CCI network

## MISSIONS

### TO SUPPORT

French companies at every stage of their projects in China to translate their ambitions into business, as well as to inform and guide Chinese companies wishing to expand in France.

### TO PROMOTE

Our members' interest by lobbying Chinese and French economic and political decision makers.

### TO LEAD

The French business community through our various business events, a vibrant platform for exchange and networking.

# PATRON MEMBERS

CCI FRANCE CHINE warmly thanks its Patron Members for their great support.



# NETWORK

CCI FRANCE CHINE is represented by 4 branches and representatives across China.



## NORTH CHINA

**529** members

### BEIJING BRANCH

Representations: Dalian, Qingdao

## CENTRAL CHINA

**831** members

### SHANGHAI BRANCH

Representations:  
Chengdu, Chongqing and Hangzhou

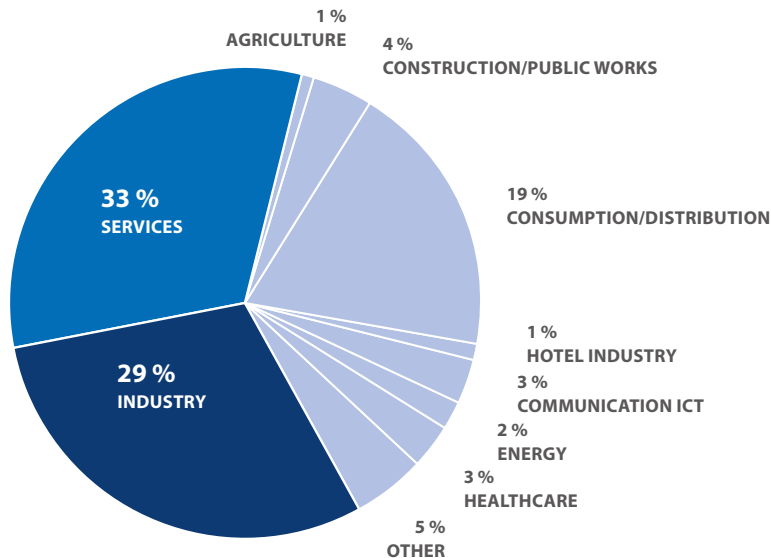
## SOUTH CHINA

**315** members

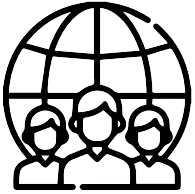
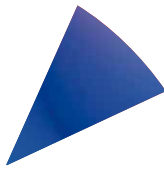
### GUANGZHOU, SHENZHEN BRANCHES

Representations: Guangxi and Kunming

### Member breakdown by sector (2023)



# 2023 KEY FIGURES



# 1,675

Members

# 79

Patron Members



## 212

Events  
Offline & Online



## 13,764

Events  
Participants



## 55

Hosted  
Companies



## 29

Business Support  
Projects



## 74

Trainings  
Offline & Online



## 569

Trainees



## 29

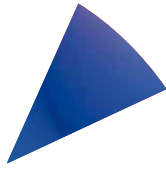
Recruitments



## 5

Recruitment Fairs  
110 companies  
2,000 candidates

# ESSENTIAL



National membership with exclusive services.



**National Membership**

---



**Free access for your employees to all the CCI events:  
Conferences, Working Groups & Seminars**

---



**Free Visa Fast Track Service**

---



**Member's discount on all our services: Recruitment, Training, Advertising and  
Business Services**

---



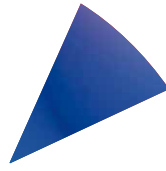
**Access to high level events**

---



**Stay informed on French-Chinese business through our communication tools:  
Newsletter, Magazine, Directory & Website**

# EXCLUSIVE BENEFITS



## SOCIAL MEDIA



**Share your company's news with CCI FRANCE CHINE**

## SPECIAL PUBLICATION



**A special publication dedicated to Patron Members**

## WELCOME MAILING FOR NEW PATRON MEMBER



**Special communication to present new Patron Member to more than 10,000 contacts in our database**

## VISIBILITY



**Logo exposure on all communication materials: CCI FRANCE CHINE offices, website, weekly newsletter, magazine connexions and directory**

## DIRECTORY



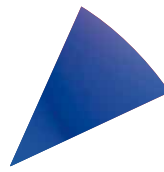
**Full page presentation on CCI FRANCE CHINE members directory**

## INTERVIEW



**Frequent & close interview with patron member to follow your demands**

# EXCLUSIVE EVENTS



**The Sino-French Forum on Ecological Transition**

This first edition brought together officials, experts and decision-makers from both countries to discuss the challenges of China's ecological transition and the innovating introduced by French and Chinese companies.



**Government Meeting**

Meeting with Mr Yang Chao, Vice Mayor of Pudong - Shanghai



**Sino-French GBA Business Summit**

A great success, with 400 participants, most of them representatives of French and Chinese companies, a few officials from both countries, and more than 115,000 viewers during the livestream.



**Committee CEO Lunch**

Exclusive Committee for CEO of Patron Members; Lunch with CEO



**Corporate Opening Day**

One-day-visit to Patron Members' companies and help them match each other

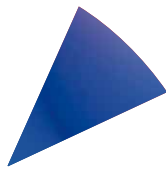


**Rdv With Government**

Meet and exchange directly with French officials in China; Embassy Briefing



# CONTACTS



## MAIN CONTACT



**Delphine YAO**  
Corporate Relations &  
Chinese Business Director  
yao.delphine@ccifc.org  
+86 (21) 6132 7116

Tel: +86 (21) 6132 7116  
E-mail: yao.delphine@ccifc.org  
2/F Mayfair Tower,  
83 Fu Min Road,  
Shanghai 200040, P.R.C.

## BRANCHES CONTACTS



**Anaëlle WU**  
Member Relations Manager  
wu.anaëlle@ccifc.org  
+86 (10) 6461 0260\*133

### Beijing Branch

Tel: +86 (10) 6461 0260\*133  
E-mail: BJ-Membership@ccifc.org  
Suites 203-216&222,  
2F, Building 81,  
No. 4 Gongti North Road,  
Chaoyang District,  
Beijing 100027, P.R.C.



**Delphine YAO**  
Corporate Relations &  
Chinese Business Director  
yao.delphine@ccifc.org  
+86 (21) 6132 7116

### Shanghai Branch

Tel: +86 (21) 6132 7100  
E-mail: SH-Membership@ccifc.org  
2/F Mayfair Tower,  
83 Fu Min Road,  
Shanghai 200040, P.R.C.



**Ophélie YAN**  
Membership & Business  
Centers Manager  
yan.ophelie@ccifc.org  
+86 (20) 2916 5530

### South China Branch (Guangzhou)

Tel: +86 (20) 2916 5510  
E-mail: ccifc-southchina@ccifc.org  
Room 802, 8/F Leatop Plaza,  
32 Zhujiang Dong Road,  
Zhujiang New Town,  
Guangzhou 510623, P.R.C.

### (Shenzhen)

Tel: +86 (755) 8632 9602  
E-mail: ccifc-southchina@ccifc.org  
Room 218, 2/F, Phase 1, Chinese  
Overseas Scholars Venture Building,  
No. 3170 Keyuan South Road,  
Nanshan District,  
Shenzhen, 518057 P.R.C.